



Connecting everyone to the outdoors™

Greenbelt Program Public Input for Berkeley County,  
South Carolina  
Timberland High School, St. Stephens - March 27, 2023

- Welcome and Background by County Supervisor Johnny Cribb and County Council
- Introduction of Consulting Team by Pegeen Hanrahan
- Berkeley County's Conservation Legacy by Chris Vaughn
- The Big Picture Opportunity by Tom O'Rourke
- The Process and Where **YOU** Fit In by Pegeen Hanrahan
- Priority Setting Exercises by Community Participants and Stakeholders
- Adjourn



Connecting everyone to the outdoors™

Agenda  
And Speakers

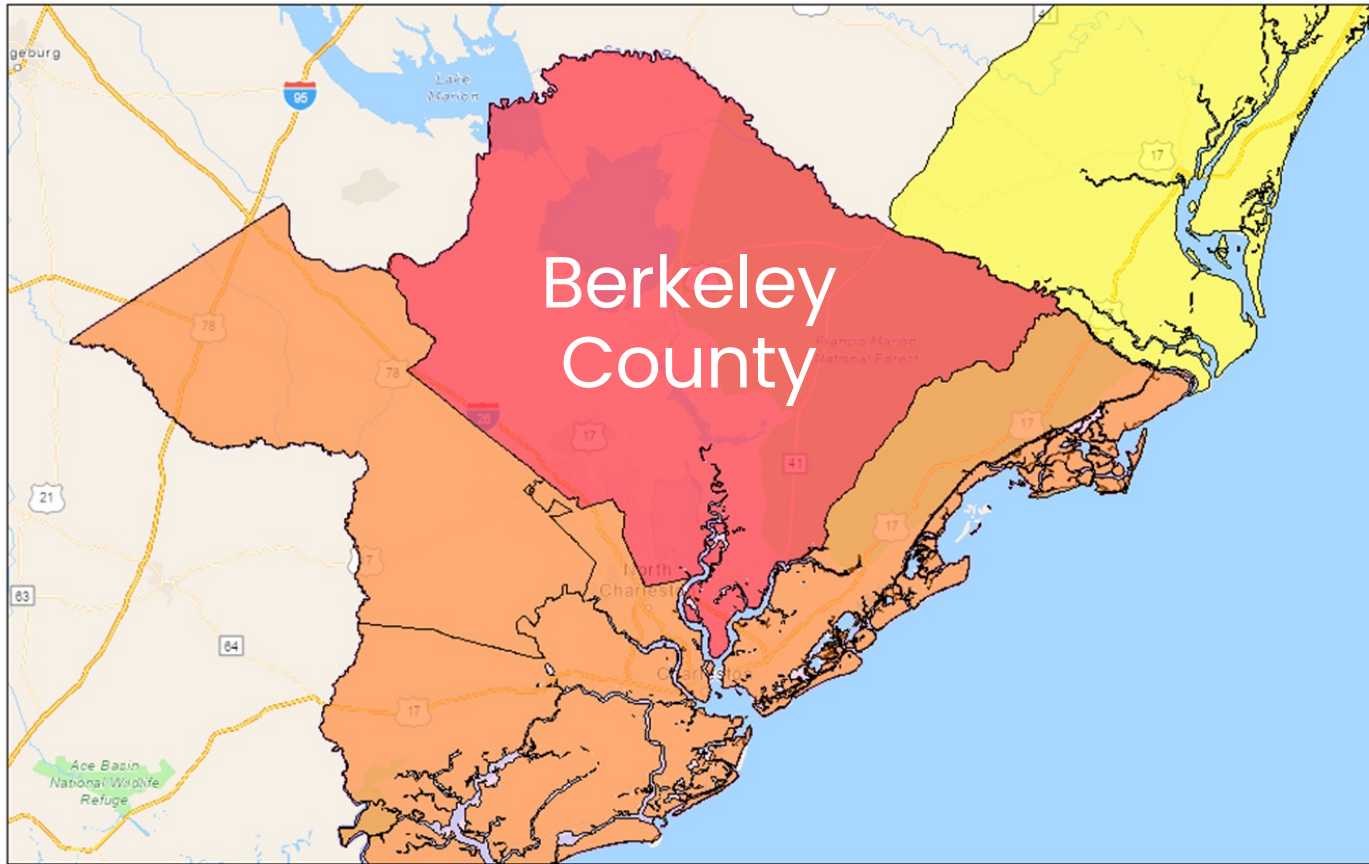


# BACKGROUND – SUPERVISOR JOHNNY CRIBB

- **10th fastest-growing County in the U.S.  
(3,143 total counties in the U.S.)**
  - **31.9% growth from U.S. Census 2010 – 2020**
  - **9 municipal governments**
  - **Diverse population**
  - **140,000 of 240,000 live in unincorporated Berkeley County**



## Coastal SC Counties: 2020-2023 Annual Population Growth Rates



Berkeley  
County

9/28/2023

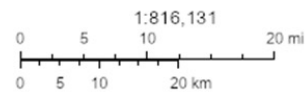
2020-2023 Growth Rate: Population

0.56% - 1.19%

1.2% - 1.83%

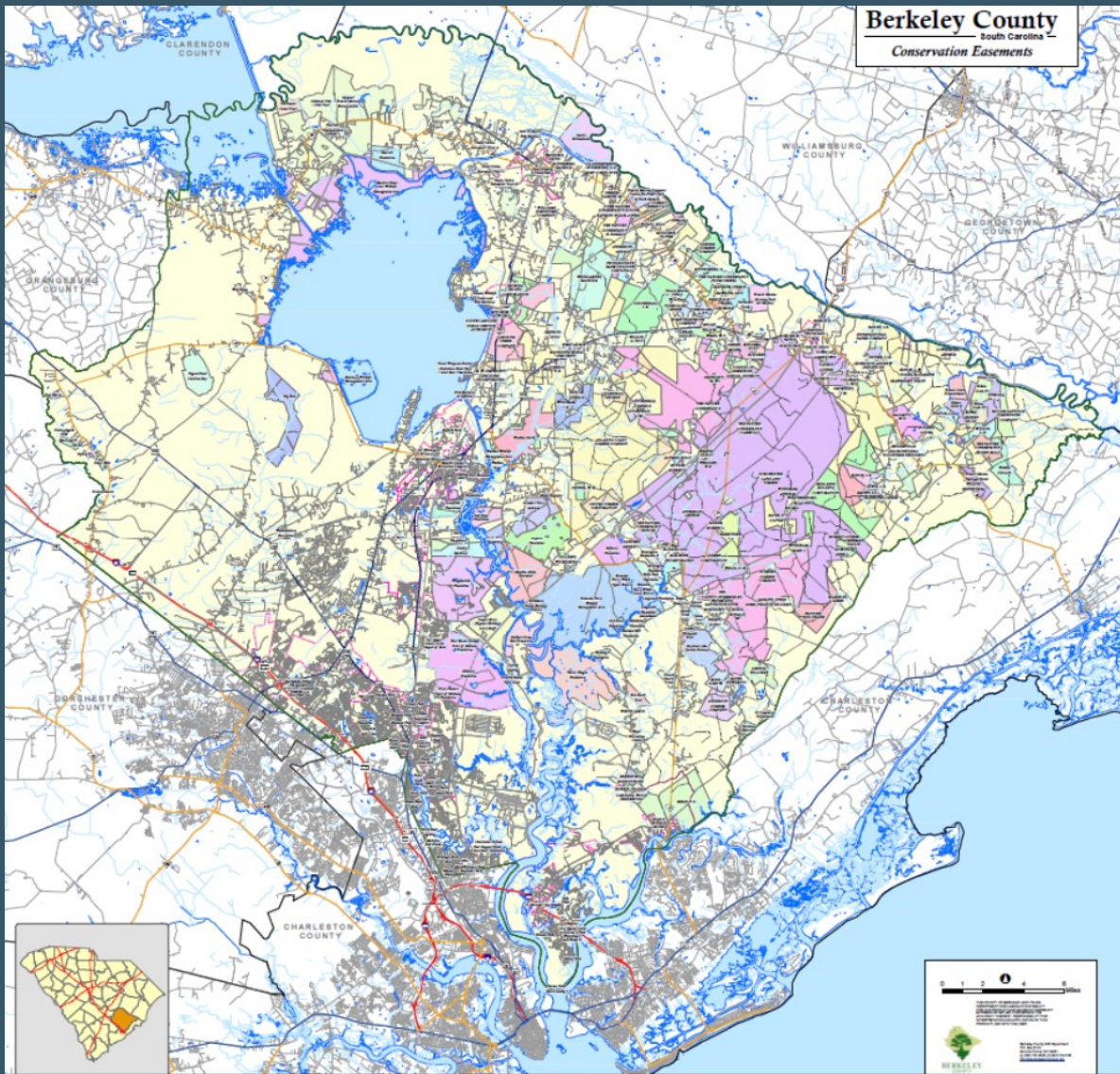
1.84% - 2.47%

Boundary



# Fast- growing population

\*Source: Charleston Regional  
Development Alliance  
([www.crda.org/real-estate](http://www.crda.org/real-estate))







**40% of  
County land  
is protected**

# Ballot Results:



## 2008 One Cent Sales Tax Referendum - 56.75%



\*Source: scvotes.gov

Berkeley Co. Special Sales and Use Tax 3 (Vote for 1)		<a href="#">CONTEST DETAIL MAP</a>	
50 of 50 Precincts Reporting			
		Percent	Votes
YES (NON)		56.75%	33,757
NO (NON)		43.25%	25,729
			59,486

Berkeley Co. Special Sales and Use Tax 4 (Vote for 1)		<a href="#">CONTEST DETAIL MAP</a>	
50 of 50 Precincts Reporting			
		Percent	Votes
YES (NON)		55.58%	32,288
NO (NON)		44.42%	25,802
			58,090

## 2014 One Cent Sales Tax Referendum - 67.25%

Question 1 (Vote for 1)		<a href="#">VOTE TYPE SUMMARY</a> <a href="#">CONTEST DETAIL MAP</a>	
72 of 72 Precincts Reporting			
		Percent	Votes
Yes (NON)		67.25%	27,890
No (NON)		32.75%	13,583
			41,473

Question 2 (Vote for 1)		<a href="#">VOTE TYPE SUMMARY</a> <a href="#">CONTEST DETAIL MAP</a>	
72 of 72 Precincts Reporting			
		Percent	Votes
Yes (NON)		66.49%	27,188
No (NON)		33.51%	13,704
			40,892

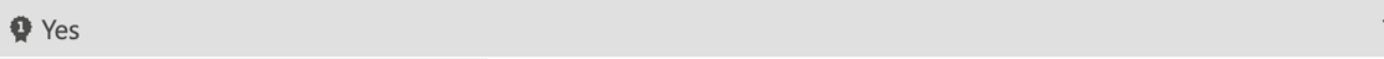
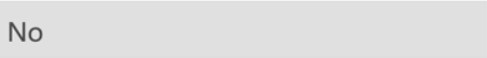
# ONE CENT SALES TAX RENEWAL – 2022 REFERENDUM




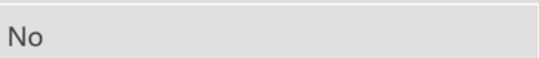
- Greenbelt component added (10% funds)
- Provided best opportunity to address transportation, conservation & recreation without raising taxes
- A history of living up to prior project plans important to County's credibility. Focus was on maintenance / improvement of existing roads & land / water quality protection



 **RESULT: 73.82%**

★ Berkeley County Question 1 - Sales and Use Tax Referend (Vote For 1)		<a href="#">View Contest Detail</a>	
Precincts Reporting: <b>100%</b>		Percentage	Votes
NON	 1 Yes	73.82%	49,545
NON	 No	26.18%	17,573
			<b>67,118</b>

★ Berkeley County Question 2 - Bond Referendum (Vote For 1)		<a href="#">View Contest Detail</a>	
Precincts Reporting: <b>100%</b>		Percentage	Votes
NON	 1 Yes	71.12%	45,540
NON	 No	28.88%	18,491
			<b>64,031</b>

**Largest win for a measure (including conservation)  
in SC history**

# BY THE NUMBER\$:

**2008 Referendum  
Sales Tax  
Collections**



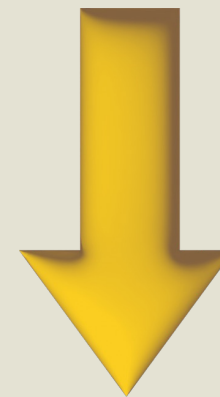
**\$143,131,390**

**2014 Referendum  
Sales Tax  
Collections:**



**\$273,385,046**

**2022 Referendum  
Estimated Sales Tax  
Collection:**



**\$587,000,000**

# TAKE HOME MESSAGES:

---

- **Trust is key!**
- **Important to follow will of voters (as understood through polling, public meetings & casual conversations)**
- **Integrity of program will help future success.**





**Pegeen Hanrahan, P.E.**, Southeast Conservation Finance Director, Trust for Public Land

**Mitchel Hannon**, Trust for Public Land GIS Program Director

**Blake Sanders, PLA, ASLA** Studio Main

**Eric Davis, CPRP** Studio Main Lowcountry

**Rebecca Vance, AICP, ICMA-CM**

Vance LLC

**Chris Vaughn**, Executive Director, Lord Berkeley Conservation Trust

**David Ray, J.D.** Chief Conservation Officer, Lowcountry Land Trust

**Tom O'Rourke, CPRP** Parks Planning Consultant



Connecting everyone to the outdoors™

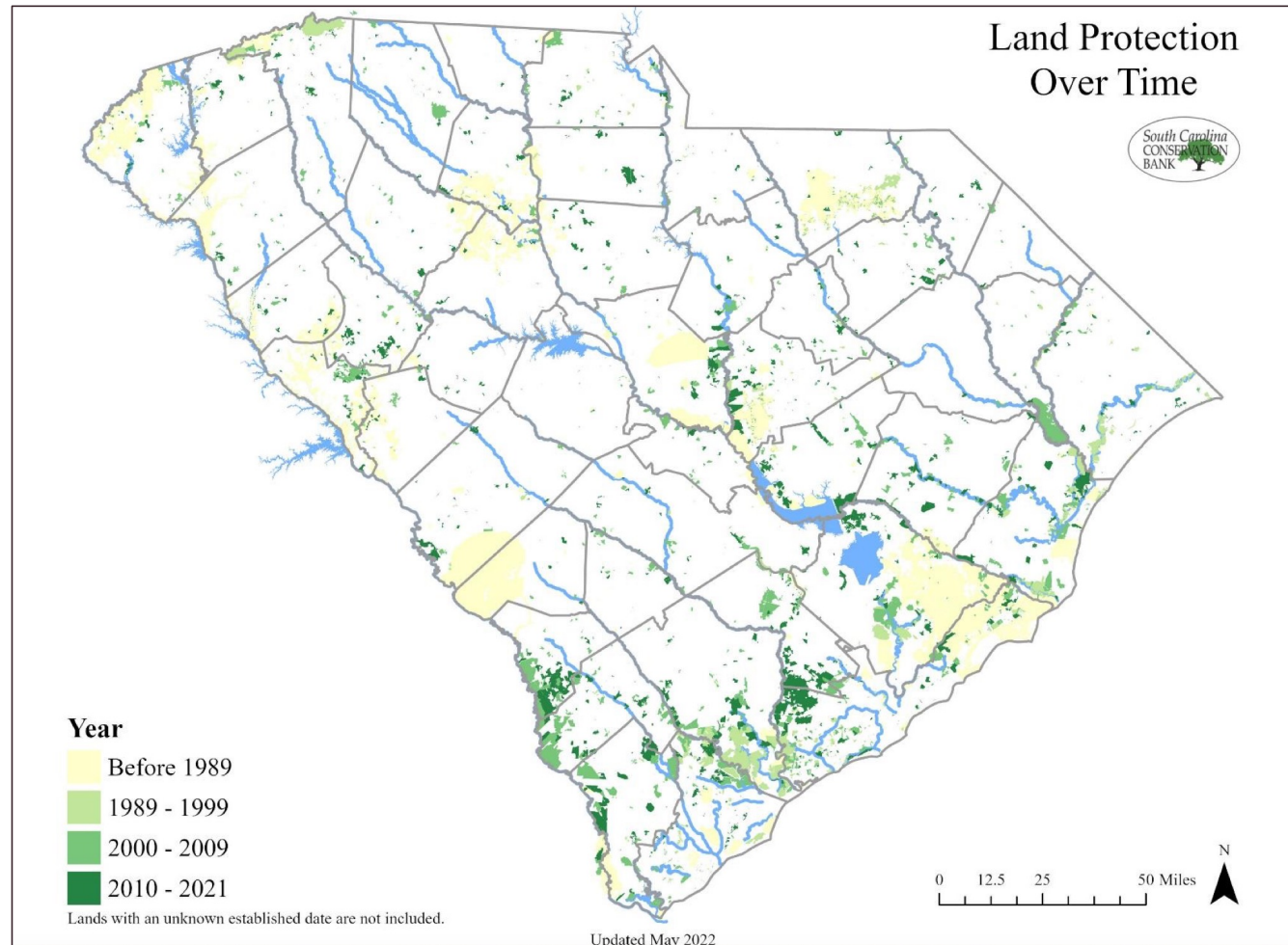
# Introduction to Our Team

By Pegeen Hanrahan

Our Protect Team



# Berkeley County's Conservation Legacy – Chris Vaughn, Lord Berkeley Conservation Trust



# The Big Picture and Where YOU Fit In – Tom O'Rourke



- We are here to ask your guidance on how the County should spend its voter-authorized greenbelt funds, and which values should guide project selection.
- Over seven years, Berkeley County will dedicate 10% of the transportation sales tax revenues to protecting land and creating outdoor recreation opportunities.
- This is estimated at \$58.7 million total.
- The County will also seek private, state and federal funds.



Connecting everyone to the outdoors™

Meeting Purpose  
We Need YOU!





Using ten percent (10%) of the referenced tax for financing greenbelt initiatives (including but not limited to, purchasing property for conservation, purchasing conservation easements, creating passive greenspace, creating active greenspace, protecting natural resources, protecting agricultural or heritage landscapes, and protecting scenic corridors).



Connecting everyone to the outdoors™

# Ballot Language Defines Uses of Funds

Anticipated local revenue of up to \$58.7 Million

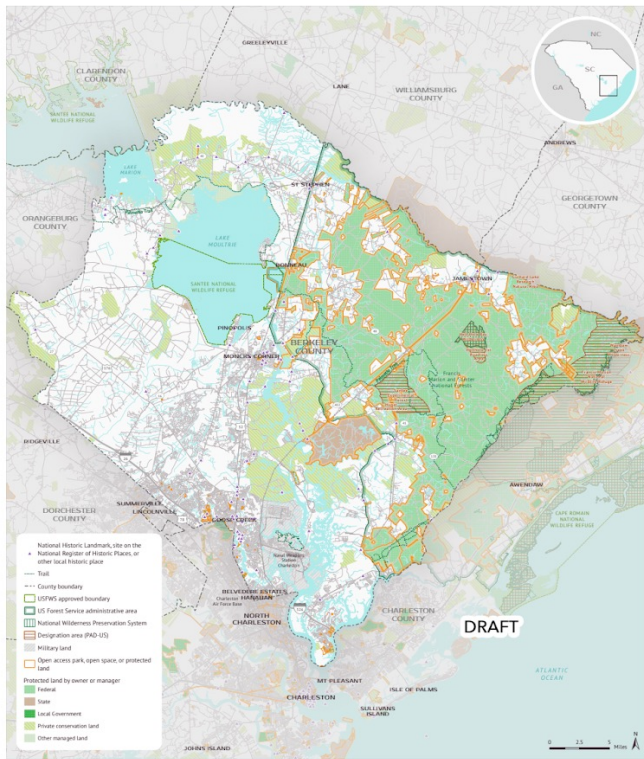


- Speak to our team and County representatives
- Write comments on cards
- Place numbered stickers on places to protect with detail on cards
- Respond to questions on posters



Connecting everyone to the outdoors™

Exercises  
Several Ways to Provide Input



## Study Area

BERKELEY COUNTY GREENBELT, SOUTH CAROLINA

March 18, 2024. Copyright © Trust for Public Land, Trust for Public Land and Trust for Public Land logo and iconography registered assets of Trust for Public Land. Information on this map represents the program administrator and is not intended to be used for any other purpose.



Each station has one quarter of the County on a map, please identify the places that you would like to see funds allocation for conservation, active greenspace, heritage sites, and so on (see definitions at tables).

Each table has the ballot language, timeline, cards, numbered stickers to identify locations.



Connecting everyone to the outdoors™

# Mapping Your Greenbelt Priorities

Identify What Matters to YOU, Tell Us WHY

